

Girl Scouts of Virginia Skyline Council

GIRL SCOUT DOLL COLLECTING PATCH REQUIREMENTS



**Prepared by:
“Now and Then Doll Club”
Fredericksburg, VA
2001**

TABLE OF CONTENTS

patch Objective	page 1-3
Requirements	Page 4-8
Doll Vocabulary	Page 9-20
Yarn doll Directions	Page 21
Americana Worry Doll	Page 22
Handkerchief Doll	Page 23
Cloth Doll/Pattern	Page 24-25
Regional Directors List	Page 26
Museum List	Page 27-29

GIRL SCOUT DOLL COLLECTING PATCH

Daisy Girl Scout Doll Collecting Patch Requirement

(Complete 1 ♣ and 1 elective)

- ♣ 1 Requirement - Pick out your favorite dressed doll and choose one of the electives below.

Electives - choose one (1)

1. Take your doll to your daisy meeting and tell your friends about the doll.
Example: How large, how old, who gave it to you, where you keep your doll when you are not playing with it.
2. Have several friends into your home and show/tell them about your doll.
Example: How large, how old, who gave it to your, where you keep your doll when you are not playing with it.

Brownie Girl Scout Doll Collecting Patch Requirements

(Complete 2 ♣ and 2 electives)

Requirements - 2 (Choose from this list)

- ♣1. Pick out your favorite doll.
- ♣2. Talk to a mother, grandmother, or older adult about dolls of their generation
- ♣3. Be able to make a doll and dress.
- ♣4. Draw or cut out a picture from a magazine or catalog of an outfit for your doll (example: Sunday dress, play suit, coat and hat, nightgown, pajamas).



Electives - Choose 2 Use list from pages 1 and 2

Junior Girl Scout Doll Collecting Patch Requirements

(Complete 4 ♣ and 4 electives)

Requirements - 4 Use list from pages 2 and 3

Electives - 3 Use list from pages 2 and 3

Cadette/Seniors Girl Scout Doll Collecting Patch Requirements

(Complete 5 ♣ and 5 electives)

Requirements – 5 Use list from pages 2 and 3

Electives – 5 Use list from pages 2 and 3



Patch Objective: To familiarize Girl Scouts with different types of dolls and to develop an appreciation for doll collecting and doll making.

Requirements:

D, B, J, C/S to the left of the requirement means that it is appropriate for that level.

D = Daisy, B = Brownie, J = Junior, C/S = Cadette/Senior

B, J, C/S ♣ 1. Be able to define antique, modern, and collectible dolls.

C/S ♣ 2. Be able to list 3 natural and 3 man-made materials used to make dolls.

B, J, C/S ♣ 3. Talk to a mother, grandmother, or older adult about dolls of their generation.

- C/S ♣ 4. Talk to a doll collector about doll collecting.
- B, J, C/S ♣ 5. Be able to make a doll and dress.
- D, B, J ♣ 6. Pick out your favorite dressed doll.
- B, J, C/S 7. Visit a museum with a doll exhibit or the local library. Ask about books on dolls. If you have a library card, check out the book(s) and read about the dolls. At the next troop meeting, share your book(s) with the members of your troop. Tell what you liked most and which doll in the book was your favorite. [See the list included for contacts for doll museums in your area].
- B, J, C/S 8. Visit your local toy shop and note the different types of dolls and manufacturers. Note 3 doll companies and the dolls they make. From the advertising, decide which doll you believe is the most popular and why.
- J, C/S 9. There are many types of dolls. An easy way to sort your dolls would be to catalog them. This can be done based on type of materials the dolls are made of (cloth, porcelain, plastic), type of doll (baby, child, or adult), the maker of the dolls, the height of the doll, who gave you the doll, and when. Select a method and catalog all of your dolls. Write a list and consider decorating a special cover for your catalog.
- C/S 10. Visit a doll show or contact a doll club to speak with your troop.
- B, J, C/S 11. Select your favorite doll and take it to a troop meeting. Share the doll with the members of your troop.
- C/S 12. Learn how to transport and store your dolls properly.
- C/S 13. Help a Daisy, Brownie or Junior Troop with doll collecting patch.

HELPS FOR LEADERS

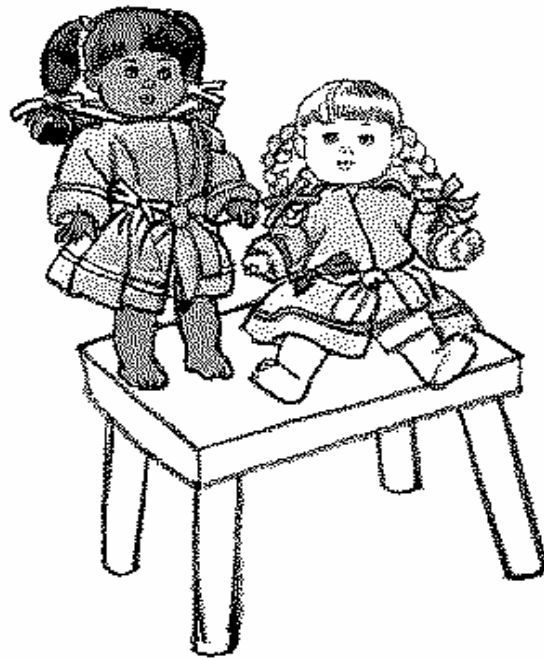
REQUIREMENT 1 - BE ABLE TO DEFINE ANTIQUE, COLLECTIBLE DOLL, MODERN DOLLS, AND BECOME FAMILIAR WITH VARIOUS VOCABULARY WORDS RELATED TO DOLLS.

Antique Dolls - 100 years or older.

Modern Dolls - made since 1975

Collectible Dolls - Produced after 1920. Dolls are considered collectible based on the public demand for them, their theme, or the artist that makes them. Many dolls are both collectible and modern, or collectible and antique.

Vocabulary list starts on page 9.



REQUIREMENT 2 - ABLE TO LIST 3 NATURAL AND 3 MAN-MADE MATERIALS USED TO MAKE DOLLS.

NATURAL	MAN-MADE
Clay	Super-sculpy (art clay)
Porcelain	Composition
Cloth	Vinyl
Sawdust	Plastic
Wood	Celluloid
Wax	Resin
Straw	Styrofoam
Food (gourds, wish bones, dried apples, corn cobs, nuts)	Wire
Bisque	Felt
Cotton (kapok)	Rubber
Spanish Moss	Socks
Bread Dough	papier-mâché
Reindeer Hair	
Paper	
Glass	
Clothespin	

REQUIREMENT 3 - TALK TO A MOTHER, GRANDMOTHER, OR OLDER ADULT ABOUT THE DOLLS OF THEIR GENERATION.

- 1 = Daisy Girl Scouts
- 2 = Brownies
- 3 = Juniors
- 4 = Cadettes/Seniors



1. Did you play with dolls as a child? (2,3,4)
2. Where did your dolls come from? (1,2,3,4)
3. What were your dolls made of? (2,3,4)
4. Did the adults in your family sew clothes for your dolls? (2,3,4)
5. Did you learn to sew by making clothes for your dolls? (4)
6. Did you play dolls with anyone else? (1,2,3) If so, how did you play? (2,3,4)
7. Where are your dolls now? (1,2,3,4)
8. Were your dolls a special part of your life? (2,3,4)
9. Do you have a favorite memory about your dolls? (1,2,3,4)
10. Did you have a favorite doll as a child? (1,2,3) What was it? (1,2,3) Do you have a favorite doll now, as an adult? (2,3)
11. Did you have many dolls as a child? (2,3,4)
12. How old were you when you played with dolls? (2,3)
13. How old were you when you stopped playing with dolls? (2,3,4)
14. Which doll did you play with the most? (1,2,3,4)

REQUIREMENT 5 - BE ABLE TO MAKE A DOLL

Yarn doll (1,2,3)

Hankie doll (2,3,4)

Worry doll (2,3,4)

Rag Doll (3,4)

Directions and necessary patterns for all dolls are attached.

REQUIREMENT 6 - PICK OUT YOUR FAVORITE DRESSED DOLL

ELECTIVE 7 - VISIT A MUSEUM/LIBRARY

Write in a journal or make a scrap book about what you saw in a museum or in a library book or magazine. Listing of doll museums is attached.

Check out/read a book on dolls/doll collecting.

ELECTIVE 8 - VISIT A TOY SHOP

Make a photo journal or scrap book from pictures from a toy shop, catalog, or magazine about the different types of information required from page 1.

ELECTIVE 9 - CATALOG YOUR DOLLS

Catalog your dolls according to the information from page 1 about age of doll, type and material the doll is made from.

ELECTIVE 10- DOLL SHOW/CLUB

Make a scrap book or photo journal of your experience of attending a doll show or doll club meeting. A list of regional directors for the United Federation of Doll Clubs is in the back of this book.

ELECTIVE 11- FAVORITE DOLL

Write in your journal or scrap book about your experience of talking with your troop about your doll. Plan a tea party for your troop and dolls.



ELECTIVE 12 - LEARN HOW TO TRANSPORT AND STORE YOUR DOLL PROPERLY.

- A. to transport your doll, learn how to wrap doll in a cotton material (sheet, pillow case, towel).
- B. to carry in a sturdy canvas bag, such as a gym bag, tote bag or sturdy box with a lid.
- C. to store antique, collectible, or modern doll - never wrap in plastic. Use cotton material.
- D. dolls with sleep eyes - place wrapped doll face down.
- E. if using tissue paper, make sure it is acid free.
- F. Never store in air tight containers, use cardboard or wood.
- G. Do not store in extreme temperatures (hot, cold, or damp). Never in attics or unfinished basements.

ELECTIVE 13 - HELP A YOUNGER TROOP WITH DOLL COLLECTING

Work with a Daisy, Brownie or Junior troop with Show and Tell, help with doll making, escort on trips, and encourage them to succeed.

DOLL VOCABULARY ABRIDGED FROM UFDC, INC. 1995

These words are marked with a 1, 2, 3, or 4 to indicate which program level should learn the word and its meaning.
1 = Daisy, 2 = Brownie, 3 = Junior, 4 = Cadette/Senior

2,3,4 Accessory - item that is original to the doll at the time of manufacture.

4 Action Kewpie: all -bisque, non-articulated doll based on Rose O'Neill's design, made in Germany; often called a figurine.

3,4 Adult body: body with adult contours and proportions, not necessarily sexed.

2,3,4 Advertising doll: 3 types

licensed product: a doll for which the manufacturer obtained a license in order to use a product and design name in connection with the doll.

Premium doll: a doll whose acquisition was contingent upon the purchase of a product, or given as a premium for selling a product or service.

Trademark doll: doll marked with a symbol created by the manufacturer.

2,3,4 Age of doll: the following dates have been determined, purely for exhibition purposes:

antique - 100 years old

modern - Produced since 1975

Collectible - Produced after 1920

3,4 All-original doll: refers to the body parts, clothing and accessories made for a specific doll at the time of the doll's manufacture.

3,4 All other materials: any other material not specified.

3,4 American companies: companies in the United States selling dolls by or for them, domestically or abroad.

4 Anatomically correct: having sexually specific features.

2,3,4 Animal-face doll: This designation includes the two-face variations with one human face and one animal face.

4 Apollo knot: elaborate style of hairdo most often found on the early

molded-hair, papier-mâché dolls of the 1830's, also called milliner's models.

- 1,2,3,4 Arms: (swivel) having some type of attached or loose ball joint that facilitates movement in many directions.
- 4 Articulation: the state of being jointed.
- 4 Artist doll: doll created by an artist either taking an idea and developing it into their own creation, making one-of-a-kind doll that is never made again, or first doll which is the first one made by an artist entirely of their own design.
- 4 Artist doll production: when the artist has help producing dolls but does the majority of the work.
- 3,4 Authentic: of undisputed origin
- 3,4 Authentic clothes: clothes that are in a style with the period of the doll.
- 4 Authenticate: the determination of the maker, the country of origin, and the date of a particular doll.
- 4 Automation: doll with a mechanism (usually internal) which causes complex human-like movements.
- 1,2,3,4 Baby doll: infant/toddler: dolls that represent a particular like phase.
- 2,3,4 Bald head: head of a china or any other material which is dome shaped and has no holes cut in the pate.
- 3,4 Ball-jointed body: the use of wooden balls at the joints of the limbs to achieve articulation.
- 3,4 Bed doll: long-limbed doll meant to be used as a decoration for a bed.
- 4 Belton type: bisque heads which may have one, two, or three small holes in the pate, but are otherwise uncut.
- 2,3,4 Bent-limb body: jointed body made with five pieces and having all four

- limbs bent.
- 4 Bledermeir head: collector term for bald-headed doll using a black painted pate.
- 4 Biskoline: material similar to celluloid used by Parson-Jackson Co. about 1912.
- 3,4 Bisque: unglazed porcelain dolls, usually tinted.
- 3,4 Bisqued-hipped doll: doll with head, shoulder plate, hips and lower limbs of bisque with a cloth midsection, upper arms, and upper legs.
- 4 Blank: term used to describe unpainted china heads.
- 2,3,4 Body: adult, baby, cloth, mold seams, teen, and toddler are all types of bodies for dolls.
- 4 Bonnet-head doll: doll with hat or bonnet molded as an integral part of the head.
- 1,2,3,4 Boy doll: doll representative of a male child.
- 2,3,4 Brother/sister doll or boy/girl pair: dolls sold originally in matching boy/girl outfits.
- 4 Cage doll: doll with head, upper torso and arms of carved wood. May have carved hair or a wig. Doll has no legs but is resting on an open work, cone-shaped wooden cage. Original purpose uncertain.
- 4 Case doll: dressed doll, permanently enclosed in a case with a glass front and occasionally glass sides.
- 2,3,4 Celebrity doll: doll made to resemble a celebrity or named for a celebrity by the maker.
- 4 Celluloid: synthetic material composed of cellulose nitrate.

- 3,4 Celluloid doll: doll with celluloid head or made completely of celluloid.3,4
Celluloid eyes: eyeball is made of metal or wood and covered with celluloid.
- 3,4 Ceramic doll: includes bisque, china and pottery dolls.
- 3,4 Character-face doll: doll having lifelike features of real people, or exaggerated, possibly grotesque features.
- 3,4 China: glazed porcelain doll.
- 3,4 China doll: the term applies to dolls with heads made of china as well as all-china dolls.
- 1,2,3,4 Cloth doll: doll made of fibers - woven, pressed, knotted, or treated materials.
- 2,3,4 Clothing/costume: cocktail ensemble, formal gown, hostess ensemble, and prom gown are costumes with varying length in dress/skirt.
- 3,4 Clothing/original: clothes placed on a doll by the manufacturer when it was first sold are called original, commercial clothes. The clothes belonging to a doll during its first ownership can be called original. These original clothes are most important because they are the best and most precise key to the date of the doll and to the age and sex represented.
Appropriate homemade clothes, appropriate manufacturer's clothing, contemporary generic homemade clothing, generic commercial clothes, and manufacturer's original clothing are types of clothes that can be found on dolls.
- 3,4 clothing/men: formal wear and informal wear are types of varying styles that can be found on male dolls.
- 2,3,4 clothing/sleepwear: pajamas, piegnoirs, nightgowns, etc.
- 2,3,4 clothing/street ensemble: clothing made of plain, functional fabrics for female adult dolls.

- 1,2,3,4 collectible doll: term applied to recently made dolls.
- 4 composition: doll with either the head only, or the entire doll made of composition. A general term which includes some later papier-mâché as well as various mixtures of materials, usually with a paper or wood-pulp base.
- 3,4 contemporary: of the same period.
- 3,4 costumed by owner: doll whose clothing and accessories are made by the owner.
- 4 crèche figure: originally, crèche figures were displayed in a nativity scene or used for other religious observances.
- 4 dating a doll: whatever method is used in arriving at the date of a doll.
- 4 DEP: deponirt (German) and depose (French). Marking on German and French dolls claiming registration.
- 1,2,3,4 description of a doll: a doll may be accurately described by giving its trade name, the name of the maker, the name of the designer, and the material of the head.
- 4 distributor: company who sells dolls at a wholesale level that are manufactured by other companies.
- 1,2,3,4 drink and wet dolls: doll that has a mouth opening that is connected to an exit hole via a tube used for liquid and/or food of some type.
- 1,2,3,4 dolls' house doll: any doll that can be used in a dolls' house regardless of size or material.
- 4 dress set (boxed outfits): collection of related outfits made at one time to go with a doll.

- 4 Dutch Doll: probably a contraction of the word 'Deutsche' meaning German. Most of these dolls appear to have been made in the Austrian Tyrol.
- 4 early molded-hair papier-mâché: these dolls with papier-mâché molded heads, kid torsos and wooden limbs, were produced primarily in Germany from 1810-1860.
- 3,4 ears: applied, molded, painted, pierced are types of ears for dolls.
- 4 ethnic doll: doll representing specific races, nationalities, and cultures.
- 3,4 eyebrows: feathered, molded, painted are types of eyebrows for dolls.
- 3,4 eyes: celluloid, crackled, decal, flirty, glass, goggly, inset, intaglio, metal, painted, rocker, wiggle are all types of eyes for dolls.
- 3,4 face: multi-face - having more than one face.
- 2,3,4 fashion doll, modern: a doll having clothing as its main feature, such as Madame Alexander, Vogue, Ginny, or Barbie.
- 3,4 fashion doll, antique: doll originally dressed or intended to be dressed in a fashionable costume.
- 2,3,4 feet: flat or high-heeled are types of feet on a doll.
- 3,4 felt doll: doll with felt head or made completely of felt.
- 2,3,4 fictional character doll: represents a fair tale, comic character from a cartoon strip, or a character from a book.
- 1,2,3,4 fingers: separated or thumb only are types of fingers on a doll.
- 4 finishes: gesso, glossy, matte, oyster shell are all types of finishes used on some dolls.
- 4 flange neck: the bottom of the neck and the top of the shoulder fit together

with a flat surface.

- 4 flared neck: found on composition dolls (1910-1920). Other companies sewed or glued the composition neck on to the cloth bodies.
- 4 fortune-telling doll: doll with fortunes written on the segments of the paper skirt.
- 4 gift sets: boxed doll with various accessories as assembled by the manufacturer, distributor, or specific retailer.
- 4 gutta percha: a substance derived from the sap of several tropical trees. It is not the same as rubber, which is darker in color and lighter in weight. It is very brittle when hard.
- 3,4 hair: caracul, flocked, floss or string, human, mohair, molded, painted, rooted, synthetic are all types of materials that can be used on dolls.
- 3,4 half doll: doll with a molded head and upper torso and cloth lower torso.
- 3,4 hands gauntlet: hands that stop above the wrist, like a glove.
- 3,4 hard plastic: a synthetic hard, substance that gives a sharp delineation to the features.
- 3,4 head: flange, interchangeable, shoulder head, socket head, swivel head are all types of heads on dolls.
- 4 historical doll: made to represent an historical figure or era.
- 4 immobile all-bisque: small unjointed doll with molded hair, clothes and footwear. Painted after firing.
- 4 jointed doll: fully-jointed, inside disk-jointed, outside disk-jointed are dolls made to be moved at joints.
- 4 Kewpie: copyrighted doll that usually has blue wings.

- 4 kid body: all or the majority of the doll's body is made of leather.
- 3,4 knee (bent): having a joint at the knee.
- 4 knotter: bisque doll whose only movable part is the head. The heads of small knotters are attached with elastic.
- 2,3,4 lady doll: doll with face and body having the contours of an adult female.
- 3,4 latex: thin rubber material used to make doll bodies and limbs. Usually stuffed with cotton.
- 3,4 leather doll: doll with leather head or made completely of leather. The leather may be whole or split. It may have a smooth finish or a suede finish. The skin may be kid, goat, calf, lamb or other.
- 2,3,4 legs: bendable, straight and swivel are all types of legs for dolls.
- 4 long-faced Jumeau: name given to a doll having a long, bisque face and a closed mouth. The head is unmarked. The ball-jointed composition body is usually marked Jumeau.
- 4 Lov-le-tex: name trademarked by Alexander to designate dolls made of a thin "latex" which was stuffed.
- 4 magic skin: thin latex skin which is stuffed with cotton.
- 1,2,3,4 mama doll: doll with a stuffed body having a "mama" voice box in it.
- 3,4 manipulated doll: marionettes, puppets, and ventriloquist's dummies meet the basic criteria for dolls. All manipulated dolls have exaggerated features and coloring and usually demonstrate theatrical movements.
- 3,4 mannequin: a plaything used to display clothes, etc.
- 3,4 marks: logos, letters and/or numbers incised into or stamped on some portion of the doll's head or body, used for identification purposes.
- 4 masked-face doll: doll made by a technique whereby the face is formed in a

- mold. The mask is permanently attached to an existing head.
- 4 material: material of head determines type of doll.
- 3,4 mechanical doll: doll performing simple or complex functions by means of mechanisms.
- 3,4 metal doll: doll with a metal head or made completely of metal. The metal may be tin, brass, pewter, steel, silver, or other metallic substances.
- 3,4 mint: doll in original condition and appearance just as it was when new. This applies to the clothes and accessories as well as the doll itself.
- 4 mold: the form into which slip is poured or malleable material is pressed in order to produce parts of a doll. The molds in a negative form are made in a variety of substances, among them plaster, sulfur, metal, etc.
- 1,2,3,4 mouth: closed, open, open/closed are types of mouths on dolls.
- 3,4 multi-faced doll: doll having two or more faces on the same head or with additional face masks.
- 3,4 multi-head doll: doll have two or more heads. Two heads can be attached to a topsy-turvy type body or a variety of heads can be attached to the same neck, one at a time.
- 1,2,3,4 name doll: dolls often have been given names by the artist, the manufacturer, and/or the collector.
- 3,4 needle sculpture: technique in which needle and thread are used for giving a third dimension to fabric.
- 4 nodder: doll with moveable parts employing rods and weights to achieve a more prolonged movement.
- 1,2,3,4 nurser: doll whose mouth is fashioned in a manner representing a nursing baby.
- 3,4 oilcloth: cloth coated with a glossy, water-resistant substance.

- 3,4 one-of-a-kind: doll made with no copies or duplicates by an amateur or a professional.
- 4 open edition: no limit on number of dolls produced.
- 1,2,3,4 paper doll: dolls made of any type of paper, cardboard, etc.
- 3,4 papier-mâché: there are two principal forms of papier-mâché. One is made with laminated sheets of paper glued together. The second method is nearly always used for dolls and combines paper pulp with various other ingredients to form a type of composition.
- 4 Parian doll: doll made of fine white bisque (unglazed porcelain) without tinting. The features, hair, and cheeks may be painted.
- 3,4 peddler doll: doll dressed to represent a sales person carrying his/her wares.
- 4 peg-wooden doll: doll made entirely of wood with mortise and tenon peg-joints. Parts of these dolls are carved and parts are turned.
- 3,4 period costume: period costumes on dolls in original clothes often represent periods earlier than that of the doll itself.
- 3,4 pincushion doll: the term applied to a doll's head and upper torso even when it is used for other decorative purposes such as a whisk broom, powder-puff, etc.
- 4 plastic: any of various non-metallic compounds which can be molded into various forms and hardened for commercial use, creating a feeling of inflexible rigidity.
- 4 porcelain: a hard translucent ceramic made by high-firing a pure clay.
- 3,4 primitive doll: doll of any material created by craftsmen having no formal training.
- 4 provenance: the provenance of a doll is the identification of its origin, its

period, and its type.

- 4 Queen Ann doll: doll of the Georgian Period of English history. Usually made entirely of wood. A few have limbs or other materials, such as fabric or leather. The eyes, when not painted, may be glass or porcelain. The wigs are made of flax, hemp, or hair. The face is somewhat flat except for the nose.

- 3,4 reproduction: doll made by producing a mold from an existing doll and using this mold for the reproduction of a near-exact copy.

- 2,3,4 restored doll: doll that has been repainted and/or repaired with replaced parts. Cleaning a doll or restringing a body does not constitute restoration.

- 2,3,4 rubber doll: doll made of either soft or hard rubber.

- 3,4 shoulder head: the head and shoulder of a doll made as a single unit and of a different material from that of the torso.

- 1,2,3,4 sleep eyes: eyes which are opened or closed by various methods and devices such as wired, pull strings, gravity, etc.

- 4 slit head: head which is slit from front to back at the top of the head with hair inserted into the slit.

- 3,4 Snow baby: all-bisque doll or heads with caps covered with granular pieces of white porcelain.

- 3,4 socket head: doll's head having a neck joint wherein the hemispherical bottom of the neck fits into a socket in the top of the shoulders.

- 4 solid-wax doll: doll partly or completely made of wax.

- 2,3,4 talking doll: doll that produces a sound by mechanical means.

- 1,2,3,4 tongue: celluloid, ceramic, cloth, metal, molded, and



painted are all types of tongues for dolls.

3,4 two-dimensional wooden doll: doll made of a flat piece of wood, with or without articulation.

2,3,4 uncut-cloth doll: back and front of the doll or dolls printed on cloth and designed to be cut out and sewn together.

1,2,3,4 walking doll: a doll that can walk if hand assisted or by mechanical means.

1,2,3,4 wardrobe of a doll: clothes and accessories that are additional to those on the doll.

1,2,3,4 yarn doll: doll made wholly or partially from yarn. This includes knitted and crocheted dolls as well as the dolls wound out of yarn. Yarn dolls are not considered to be cloth dolls.



Yarn Doll

Girl Doll

Supplies: yarn and cardboard

Step 1: Cut cardboard 6 in. Long and 3 in. Wide

Step 2: Cut 1 piece of yarn at least 5 yds. long. Can be more depending on how full you want dress.

Step 3: Wrap yarn around the 6 in. length of the cardboard.

Step 4: Cut 5 - 5 in. pieces of yarn.

Step 5: take 1 - 5 in. piece of yarn and slip it through the yarn at the top of the card and knot tightly. Now pull all yarn off the card.

Step 6: Measure down 1 in. below knot and take another 5 in. piece of yarn and tie around all yard and knot. This makes the head. Put aside for now.

Step 7: Cut a piece of yarn about 4 yards and wrap around the 3 in. width of cardboard.

Step 8: Take yarn off card. Separate the strings of the doll into 2 parts. Slide the new piece in between.

Step 9: Take 1 piece of 5 in. yarn. Wrap around under arm piece and knot. This makes waist and holds arms in place.

Step 10: Take the last 2 ties and wrap and knot about ½ in. from each end of arm.

Doll finished.

Boy Doll

Follow steps 1 to 4, but cut 7 5in. pieces of yarn.

Continue following steps 6 to 10.

Step 11: Split the bottom half of yarn to make 2 legs. Take the last 2 - 5 in. pieces and tie around the ends of each leg about ½ in from the bottom.

Americana Worry Dolls

General Directions:

Use all six strands of floss for wrapping (treat as one). For a striped effect, wrap two or three different colors of floss simultaneously. When wrapping floss, secure beginning and end with small dot of glue at back of doll. Please read steps 1-8 carefully before beginning.

Materials for one:

- ♣ Craft Glue
- ♣ Scissors
- ♣ Ruler
- ♣ One baby clothespin
- ♣ Craft Picks (see individual doll instructions)
 - ♣ DMC Embroidery Floss (Art. 117) in desired colors for hair and clothing.
 - ♣ Colored pens for drawing facial features

Step 1

Using pens, draw face on baby clothespin. Let dry.

Step 2

Using desired floss color, begin wrapping upper body and continue down to waist. (Diagram 1)

Step 3

Cut 7/8" off rounded ends of craft picks for arms. (Diagram 2)

Step 4

Wrap floss around each craft pick arm to desired sleeve length.

Step 5

Glue arms onto clothespin body.

Step 6

Starting at back of doll's neck, wrap floss around 5 or 6 times to form

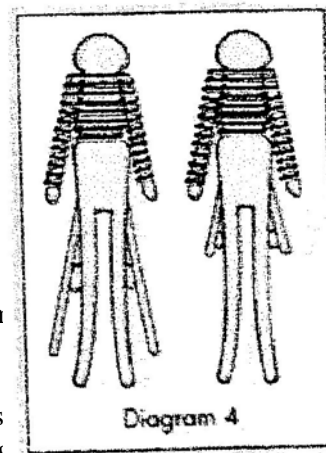
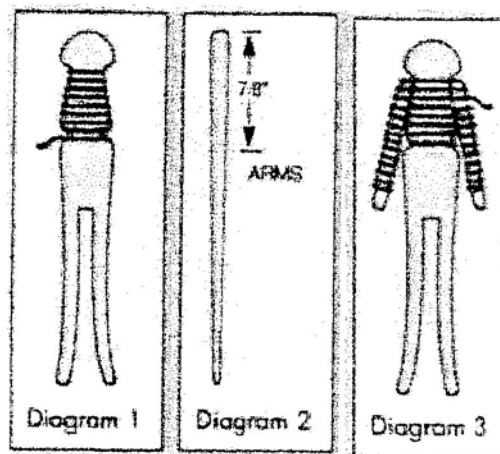
Step 7

Beginning at waist, wrap lower body. For pants or shorts, wrap floss wrap remaining leg. For a skirt, wrap floss around leg to desired length craft picks (size of pieces determined by skirt length) at sides of doll. Be sure to wrap floss around several times where craft picks are glued to make a fuller, smoother skirt line at sides.

Step 8

Glue floss to head for hair in desired style.

Permission granted for project courtesy of DMCUSA



Then
aces of

HANDKERCHIEF DOLL DIRECTIONS



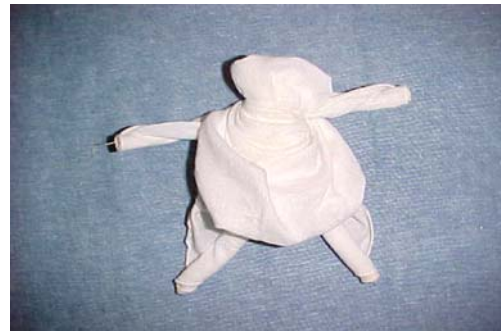
Step 1: Take a square hanky, unfold completely, then scroll each side inward until there is about 2 inches left in the middle.



Step 2, fold top portion down a little more than half way, gently spreading out the scrolls so that they lay outside the covered scrolls.



Step3: Fold up the bottom portion leaving about 1 inch, which will be the head of the doll. Again spread out the scrolls just a little.



Step 4: Take the top two scrolls, bring behind the back and tie in a single knot. Adjust to form arms, and pull on bottom scrolls for legs. Left picture is the back of doll, tied. Right picture is the front of doll.

Cloth Doll

Material List

½ yard muslin for doll body
½ yard of colored material for dress and matching panties
matching thread
yarn for the hair
polyester stuffing
lace or ribbon is option for adding to the dress

Supplies

Scissors
straight pins
needles
white craft glue (for non-sewn dolls)
pinking shears (if desirable)
chop sticks for stuffing

*You may choose to trace pattern on poster board to keep the paper pattern intact.

Face Supplies

You may use a variety of materials for putting on the face:

magic markers
acrylic paints, brushes
embroidery floss, needle
fabric paints

Daisies and Brownies

The supervising adult may either cut out the doll pattern with pinking shears for non-sewn dolls and glue the edges together with white craft glue or sew them with a machine for the girls.

Junior Girl Scouts

The supervising adult may choose to assist the scouts with the machine sewing, sew the dolls herself or assist with hand sewing techniques.

Cadets/Seniors

Girls at this level should only need to discuss with their supervisor the general directions for making of the doll and clothing her. The adult supervisor should have a doll, dress and panties pattern for each scout. From this point, the supervisor becomes a “trouble shooter”, there to give assistance and advice when the scout requests it. Neatness, creativity and artistic expression are of prime importance.

GENERAL DIRECTIONS

1. Fold cloth in half with salvage edges together.
2. Place paper or poster board pattern pieces on material with the direction of arrow along the salvage edge.
3. Draw around the poster board or cut around the pattern piece. There should be 2 of everything. (front and back).

Non-Sewn Doll

Cut out doll with pinking sheers. Lay back of doll on a washable surface. Squeeze white craft glue all around the edge of the doll back except for about 2 inches at the top of head. Place the front of the doll piece on top of the back and press down, gluing the edges together. Set aside to dry. Once dry, the doll is stuffed by the scout with fiber stuffing through the hole at the top of the head. Use a chop stick to push the stuffing into place. Glue hole at the top of the head closed. A face can be drawn on with chosen materials. The dress and panties can also be glued together in the same manner or sewn by the adult. Hair can be cut and glued using yarn or drawn on with markers.

Machine Sewn Doll

Doll: Pin front to back of the doll. Sew around the edge using ¼ inch seam allowance. Leave a 2 inch opening at the top of the head for stuffing. Clip the curves and turn doll inside out. The doll is then stuffed. Using needle and thread, the opening is closed by hand sewing. The face and hair of the doll is completed as desired. Dress and panties are sewn by machine using ¼ inch seam allowance.

Dress: With right sides together, match shoulder seams and sew both left and right. Then sew both of the side seams. The scout may either hem the dress or leave as is. Turn right side out.

Panties: With right sides together, sew the inside legs. Open up, and sew the two side seams. Hem the bottom edges if desired. Sewing a gathering stitch around the waist, put the panties on the doll, pull the gathering threads to fit, tie off, and clip threads.

REGIONAL DIRECTORS OF UNITED FEDERATION OF DOLL CLUBS

Region 1

Mary Johnson

e-mail: bjohnson@bentonrea.com
Alaska, Idaho, Oregon, Washington

Region 2 North

Anne Luree Leonard
e-mail: anneluree@juno.com
Northern CA, Nevada, Utah

Region 2 South

Karen Rockwell
e-mail: k52644@aol.com
Southern CA, Arizona, Hawaii

Region 3

Sheree Barnes
e-mail: sbarnes303@aol.com
New Mexico, Oklahoma, Texas

Region 4

Barbara Foreman
e-mail: jcudlbug@cox.net

Region 5

Sharon Geisen
e-mail: sgeisen@paulbunyan.net
Iowa, Minnesota, Missouri

Region 6

Jocelyn Mann
e-mail: jocelynn@uswest.net
Colorado, Montana, Wyoming

Region 7

Virginia Ruth Chase
e-mail: chasedollygirl@aol.com
Arkansas, Louisiana, Mississippi

Region 8

Pat Ross
e-mail: logcabin32@msn.com
Kentucky, North Carolina, Tennessee

Region 9

Charles Minton
e-mail: brandjosh@aol.com
Alabama, Florida, Georgia, South Carolina

Region 10

Dodi Becker
e-mail: beckers@mailbag.com
Illinois, Wisconsin

Region 11

Ann Seymour
e-mail: anncasey@aol.com
Washington D.C., Maryland, Virginia,
West Virginia

Region 12

Linda Cantwell
e-mail: lindacdolls@yahoo.com
Indiana, Michigan, Ohio

Region 13

JennyLou Schoelwer
e-mail: 105612.274@compuserve.com
Delaware, New Jersey, Pennsylvania

Region 14

Nancy Palazzolo
e-mail: dollienan@aol.com
New York, Connecticut, Rhode Island

Region 15

Ada Diedrich
e-mail: abdiech@msn.com
Massachusetts, Maine, New Hampshire,
Vermont

Region 16

Janet Gula
e-mail: bruhaha@rogers.com
International

MUSEUM LIST

ARIZONA

Arizona Doll & Toy Museum, Heritage Square, 602 E Adams, Phoenix, AZ 85004-1685 (602) 253-9337

CALIFORNIA

Antique Doll Museum, Hwy 101 at Welssona Rd., Paso Robles, CA 93446 (805) 238-1078

Mott's Miniatures Museum and Doll House Shop, Buena Vista, CA

Barbie Hall of Fame, 433 Waverly St., Palo Alto, CA 94301 (650) 326-5842

Helen Moe's Antique Doll Museum, Junction US 101 and Wllsona Rd., Raso Robles, CA 93445 (805) 238-2740

CONNECTICUT

Lyman All Dolls & Toys, Lyman Allyn Art Museum Harris Place, 165 State St., New London, CT 06320

Special Joys Antique Doll Shop and Museum, 41 N. River Rd., Coventry CT 07238 (860) 742-6359

This museum is also a Victorian style Bed and Breakfast.

DELAWARE

Delaware Toy and Miniature Museum, PO Box 4053, Rt 141 Wilmington, Delaware 19807 (302) 427-8697) adjacent to Hagley Museum Entrance

GEORGIA

Mary Miller Doll Museum, 211 Gloucester St., Brunswick, GA 31522

ILLINOIS

Doll Exhibit at the Hellenic Museum, The Hellenic Museum, 168 N. Michigan Ave. Chicago, IL

INDIANA

Vera's Little Red Dollhouse Museu, 3900 S. Memorial Dr., New Castle, IN (765) 593-0764

KANSAS

The Kansas City Toy Museum, Kansas City, Kansas

Loretta Moore's Antique Doll Museum, 1709 N. Buckeye, Abilene, Kansas (785) 263-2800

The Doll House Museum, 912 Broadway, Marysville, KS 66508 (785) 562-4077

KENTUCKY

Vent Haven Museum, 33 W. Maple, Fort Mitchell, KY 41017 (606) 341-0461 This is a museum that is devoted to ventriloquist dummies.

LOUISIANA

Lois Loftin Doll Museum, 120 South Washington Ave., DeRidder, LA 70634

MARYLAND

Washington's doll House, Chevy Chase, MD

MASSACHUSETTS

Yesteryears Doll Museum, Main and River St, Sandwich, Mass. (508) 888-1711

MINNESOTA

Story Lady Doll and Toy Museum, 131 N. Broadway, Albert Lea, MN (507) 377-1820

MISSISSIPPI

Yesterday's Children Antique Doll and Toy Museum, 1104 Washington St, Vicksburg, MS (601) 638-0650

MISSOURI

Society of Memories Doll Museum, 1115 South 12th, St. Joseph, MO, 64503

NEVADA

White Pine Public Museum, 2000 Aultman St, Ely, NV 89301, (775) 289-4710

NEW HAMPSHIRE

Annalee Doll Museum, Reservoir Rd, Meredith, NH (800) 433-6557

NEW JERSEY

The Doll House and Miniature Museum of Cape May, 118 Decatur St, Cape May, NJ 08204 (609) 884-6371 This is also a Bed and Breakfast

Doll Castle Museum, 37 Belvidere Ave, Washington, NJ (908) 689-7042

NEW MEXICO

Land of Enchantment Doll Museum and Shoppe, 5201 Constitution NE, Albuquerque, NM 87110

NORTH CAROLINA

Angela Peterson Doll Museum, 101 W. Green Dr, High Point, NC 27260

OHIO

The Doll Museum at the Old Rectory, 50 W. New England Ave. Worthington, OH

The Children's Toy and Doll Museum, 206 Gilman St, Marietta, OH 45750

OREGON

Jacksonville Doll Museum, 5th and California, Jacksonville, OR

PENNSYLVANIA

Mary Stolz Doll Museum, Rt. 209, Stroudsburg, PA 18360

RHODE ISLAND

The Doll Museum, 250 Thames St. Newport, RD 02840

SOUTH DAKOTA

Enchanted World Doll Museum, 615 N. Main, Mitchell, SD 57301

TEXAS

Annie's Doll Museum, 408 Greg, Calvert, TX

UTAH

McCurdy Doll Museum, 247 N. 100 East, Provo, UT

WASHINGTON

Rosalie Whyel Museum of Doll Art, 1116 108th Ave. NE, Bellevue, WA 98004

Little Habitats, 3238 Locker Rd SE, Port Orchard, WA 98366

WISCONSIN

The Fennimore Doll and Toy Museum, PO Box 151, Fennimore, WI 53809